

USE

RADIO PANEL :

COM1 : GREEN radio V/UHF, LCD preset + frequency + volume DIAL
COM2 : RED radio UHF,LCD preset + frequency + volume DIAL
NAV1 : TACAN
NAV2 : VOR.ILS
ACT/STBY : press DOWN + DIAL in NAV1/NAV2 to change MODES & SETTINGS

MULTISWITCH PANEL :

KNOB : START SEQUENCE (fuel boost pump, vent, canopy...)
UPPER ROW : ELECTRICAL (battery, alternator,power,fuel pump,emergency pump,pitot heat)
LOWER ROW : LIGHTS (beacon = formation, taxi = police)

MULTIPANEL PANEL :

AUTOPILOT : AP,HDG,ALT,APR
KNOB ALT : selected AP altitude with DIAL + LCD & ALT gauge LCD
VS : selected BINGO with DIAL + LCD & DETOT FUEL LCD
IAS : AOA (only units not decimal)
HDG : real HDG
CRS : selected CALIBRATION BAROMETRIC with DIAL+ LCD

DCSFLIGHTPANEL PROFILE M-2000C SHAN_AYA

INSTALL

ADD KEYBOARD COMMAND TO DCS

OPTIONS DE COMMANDE

M-2000C

alt

☐ Vue repliable

Réinit. catégorie (défaut)

Effacer catégorie

Effacer tout

Charger profil

Enreg. profil sous

Action	Catégorie	Keyboard	Throttle - HOTAS...	T-Pendular-Rudd...	Joystick - HOTAS ...	Mou
Alternator 1 OFF	Electrical					
Alternator 1 ON	Electrical					
Alternator 2 OFF	Electrical					
Alternator 2 ON	Electrical					
Altimeter Calibration CCW	Navigation	LAlt + LCtrl + Num -				
Altimeter Calibration CW	Navigation	LAlt + LCtrl + Num +				
Altitude Hold Mode	Auto-Pilote		Touche-JOY_BTN28			
HUD Altimeter Power Switch OFF	HUD					
HUD Altimeter Power Switch ON	HUD					
HUD Altimeter Power Switch TEST	HUD					
Maintenir l'altitude de la caméra au sol	Vue étendue	LAlt + Touche-K				
PCN Parameter ALT	INS					
PCN Parameter ΔALT	INS					
Radar Altimeter OFF	HUD					
Radar Altimeter ON	HUD					
Radar Altimeter ON, else OFF	RDI Radar					
Radar Altimeter TEST	HUD					
Selected Alt Combo FL+10	Auto-Pilote	RShift + Num +				
Selected Alt Combo FL-10	Auto-Pilote	RShift + Num -				
Selected Alt FL 1 Dec	Auto-Pilote					
Selected Alt FL 1 Inc	Auto-Pilote					
Selected Alt FL 10 Dec	Auto-Pilote					
Selected Alt FL 10 Inc	Auto-Pilote					
Selected Alt FL 100 Dec	Auto-Pilote					

MODIFICAT.

AJOUTER

EFFACER

DÉFAUT

ASSIGN. AXES

REGL. AXES

REGLAGE FF

CRÉER HTML

le branchement à

nner les périphéri

ANNULER

OK

OPTIONS

M-2000C

bingo

☐ Vue repliable

Réinit. catégorie (défaut)

Effacer catégorie

Effacer tout

Charger profil

Enreg. profil sous

Action	Catégorie	Keyboard	Throttle - HOTAS...	T-Pendular-Rudd...	Joystick - HOTAS ...	Mou
BINGO Fuel 1000kg Dec	Engine & Fuel					
BINGO Fuel 1000kg Inc	Engine & Fuel					
BINGO Fuel 100kg Dec	Engine & Fuel					
BINGO Fuel 100kg Inc	Engine & Fuel					
BINGO Fuel Combo Dec	Engine & Fuel	RAlt + Num -				
BINGO Fuel Combo Inc	Engine & Fuel	RAlt + Num +				

MODULE RADIO



M-2000C

V/UHF UHF



Selector Knobs
 COM 1 = V/UHF Preset Channels + Volume
 COM 2 = UHF Preset Channels + Volume
 NAV 1 = TACAN
 NAV 2 = VOR.ILS
 ADF =
 ACT/STBY : Press Down + Dial
 in VOR.ILS and TACAN to change Modes, Settings

VOR / TACAN



Settings
 Frequency Knobs sensitivity
 0
 ACT to STBY transfer of freq. delay (ms)
 3000

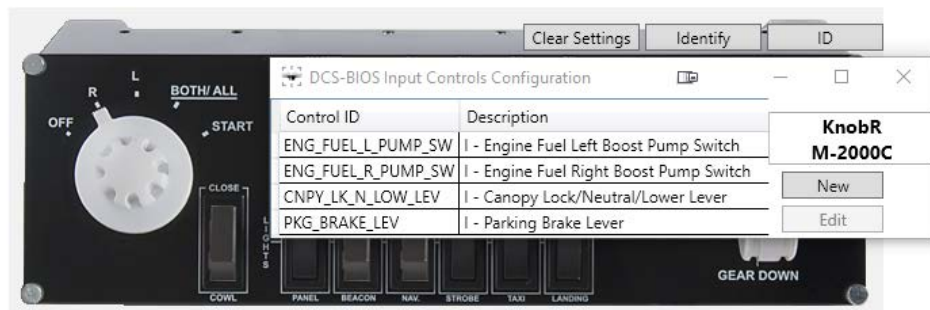
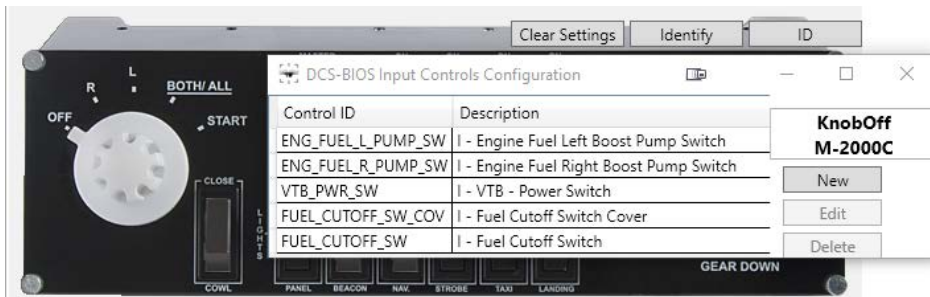
RADIO PANEL :

COM1 : GREEN radio V/UHF, LCD preset + frequency + volume DIAL
 COM2 : RED radio UHF,LCD preset + frequency + volume DIAL
 NAV1 : TACAN ,LCD + setup DIAL (2 levels)
 NAV2 : VOR.ILS,LCD + setup DIAL (2 levels)

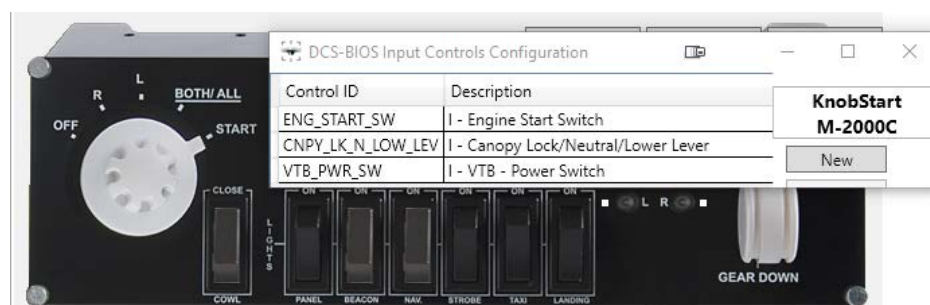
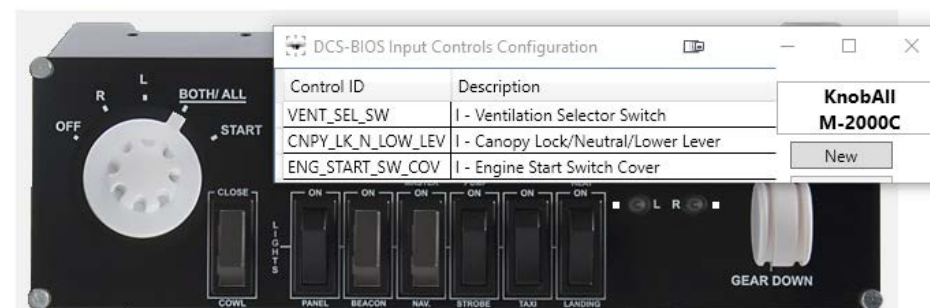
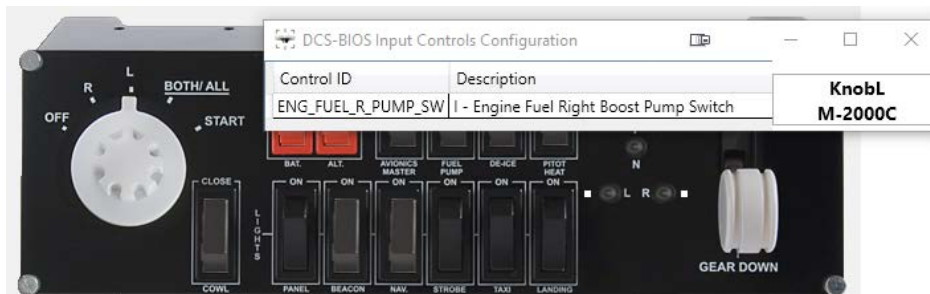
ACT/STBY : press DOWN + DIAL in NAV1/NAV2 to change MODES & SETTINGS

MODULE MULTISWITCH

START sequence



You can press COWL CLOSE for Canopy lock when you want after this point



MODULE MULTISWITCH

LANDING GEAR LIGHT



N AUX LANDING GEAR : DARK / GREEN= proceed / RED= GEAR alarm
L LEFT LANDING GEAR : DARK / GREEN= proceed / RED= BREAK light
R RIGHT LANDING GEAR : DARK / FREEN= proceed / RED= SPAD light

MODULE MULTIPANEL

All buttons [AP] [HDG][NAV][IAS][ALT][VAS][APR][REV] have same fonction in all KNOB MODE



BUTTONS

AP : AUTOPILOT MASTER
HDG : ALTITUDE HOLD MODE
ALT : SELECTED ALTITUDE HOLD MODE
APR : APPROACH MODE
REV : AUDIO WARNING RESET

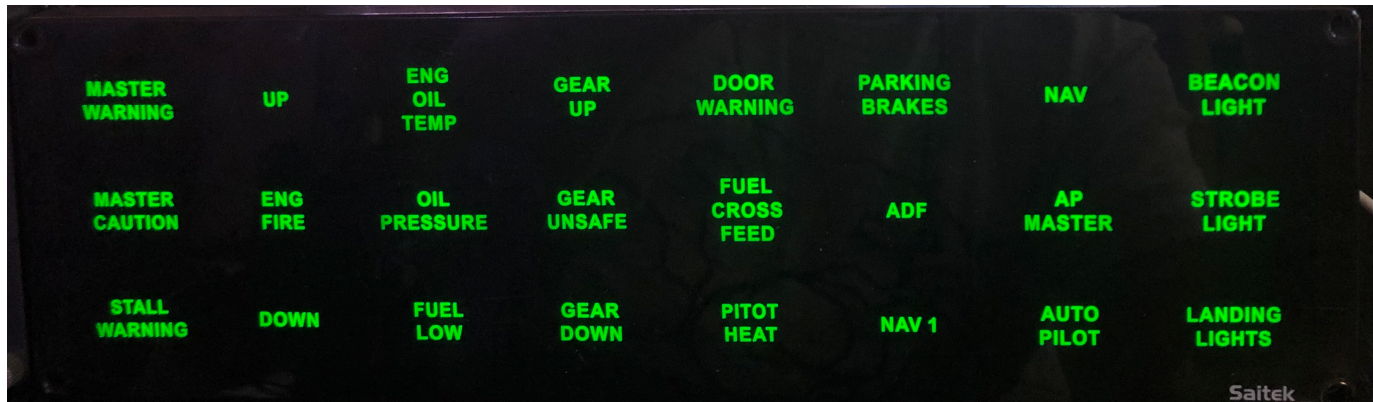
FLAPS

Down : AUDIO WARNING RESET

OTHER BUTTONS ARE FREE TO ASSIGNATE YOURSELF

MODULE BIP

TILES are linked to light or button statut in DCS , NOT on keypress SAITEK statut



Nothing particular except :

FUEL LOW = BINGO ALARM (YELLOW), LOW FUEL (RED)

NAV 1 = CONF alarm

PITOT HEAT = 3 states (green : RAS, yellow : cover switch off, red : Pitot OFF)

GEAR = up/down stay green, UNSAFE is RED until DARK=SAFE

ADF = APR is ON and balise found

STROBE LIGHT = is blinking for never forget to OFF before TAKEOFF:)

UP/DOWN = not assigned at this time